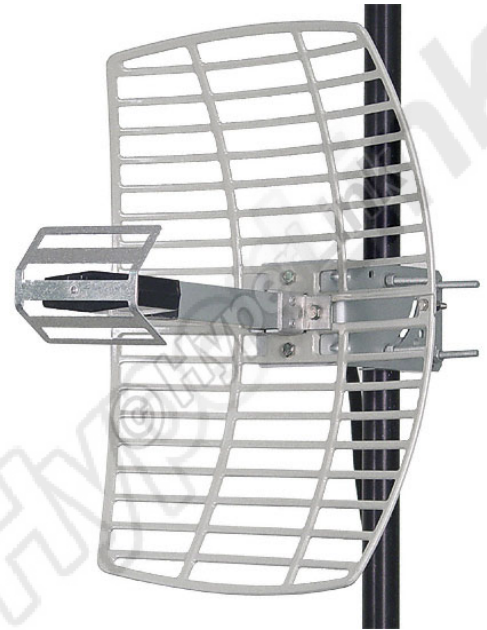


## 2.4 GHz 15 dBi Die Cast Mini-Reflector Grid Wireless LAN Antenna - Model: HG2415G

### Applications and Features

- Applications:**
- 2.4 GHz ISM Band
  - IEEE 802.11b, 802.11g Wireless LAN
  - IEEE 802.11n (Pre-N, Draft-N, MIMO) Applications
  - WiFi Systems
  - Long-range Directional Applications
  - Point to Point Systems
  - Point to Multi-point Systems
  - Wireless Bridges
  - Backhaul Applications
  - Wireless Video Systems

- Features:**
- Superior performance
  - Die cast aluminum construction
  - UV stable light gray powder coat finish
  - All weather operation
  - 16° beam-width
  - 12 inch coax lead
  - Easy to assemble
  - RoHS Compliant



### Description

The HyperGain® Directional Mini-Reflector Grid WiFi Antenna provides 15 dBi gain with a 16° horizontal beam-width for directional applications. Its compact design makes it nearly invisible in most installations, and it can be installed for either vertical or horizontal polarization. It is ideally suited for 2.4GHz ISM band applications such as IEEE 802.11b, 802.11g and 802.11n wireless LAN systems.

This antenna's construction features a rust-proof die cast aluminum reflector grid for superior strength and light weight. This antenna's 2-piece reflector grid is simple to assemble and significantly reduces shipping costs. The grid surface is UV powder coated for durability and aesthetics. The open-frame grid design minimizes wind loading.

The HG2415G antenna is supplied with a 60 degree tilt and swivel mast mount kit. This allows installation at various degrees of incline for easy alignment. It can be adjusted up or down from 0° to 60°.



Vertical or Horizontal Polarization



Tilt & Swivel Mast Mount



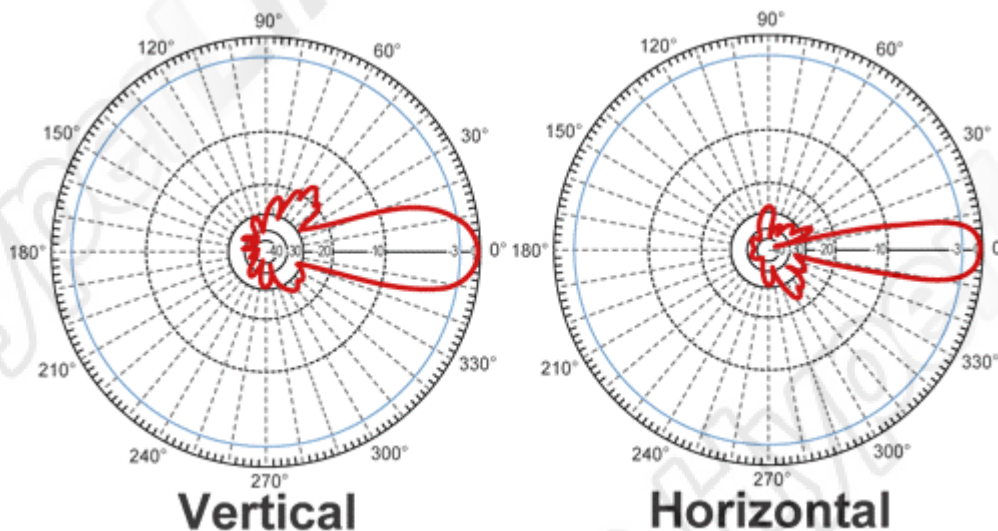
## Specifications

Frequency	2400-2500 MHz
Gain	15 dBi
Horizontal Beam Width	16°
Vertical Beam Width	21°
Polarization	Horizontal or Vertical
Front to Back Ratio	20 dB
Impedance	50 Ohm
Max. Input Power	100 Watts
VSWR	< 1.5:1 avg.
Lightning Protection	DC Short
Weight	3 lbs. (1.4 kg)
Grid Dimensions	11.8" (300 mm) x 15.7" (400 mm)
Mounting	1.25 - 2 in. (31.8 - 50.8 mm) dia mast max.
Elevation Angle	0 to +15°
Operating Temperature	-40° C to to 85° C (-40° F to 185° F)
RoHS Compliant	Yes

## Wind Loading Data

Wind Speed (MPH)	Loading
100	10.0 lb.
120	15.6 lb.

## RF Antenna Patterns



## Guaranteed Quality

This product is backed by Hyperlink's Limited Warranty